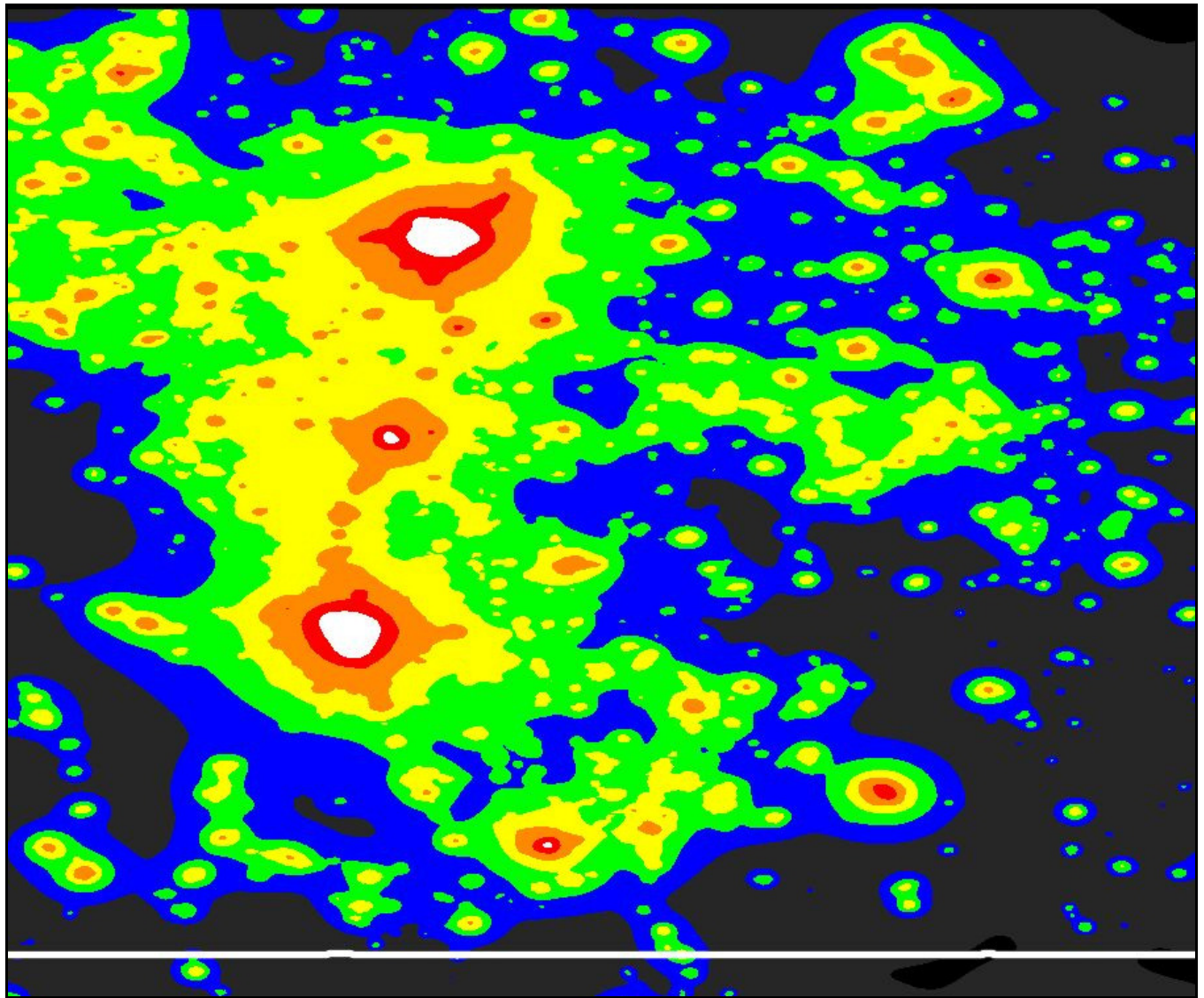


Alberta Light Pollution Map



Credit: P. Cinzano, F. Falchi (University of Padova), C. D. Elvidge (NOAA National Geophysical Data Center, Boulder). Copyright Royal Astronomical Society. Reproduced from the Monthly Notices of the RAS by permission of Blackwell Science. Colours correspond to ratios between the artificial sky brightness and the natural sky brightness of: <0.01 (black), 0.01-0.11 (dark-gray), 0.11-0.33 (blue), 0.33-1 (green), 1-3 (yellow), 3-9 (orange), 9-27 (red), >27 (white). Web Site: <http://www.lightpollution.it/worldatlas/pages/fig1.htm>

The above satellite map illustrates the levels of artificial light pollution produced by towns and cities throughout central Alberta, one of the most light polluted areas in North America. The scale ranges from completely dark (black) through 7 levels to completely white (most polluted).

The large white contour at top represents Edmonton, followed by white contours for Red Deer, Calgary, Lethbridge and Medicine Hat as we move south and eastward. The areas of high light pollution in the upper right represent the Bonnyville/Cold Lake areas and, to the south, Lloydminster. (Fort McMurray and area was not mapped by the satellite.)

Note that there is no area in central Alberta untouched by light pollution except for an extremely small section near the American border (white line at bottom of map.)

This map represents the waste of a tremendous amount of energy pouring nightly into space from each town and city. (Old-fashioned light fixtures waste approximately 1/3 of the energy used!) It also represents a tremendous threat to flora and fauna, including humans, as it interferes with the natural nocturnal rhythms of living things throughout our province.

www.AlbertaDarkSky.ca



Alberta Dark Sky Association