

Stellarium Mobile Product Comparison

This document will show what's included and not included in the free or basic version of Stellarium Mobile and what is only available in the Plus paid-for version. As of June 2022.

Quick Comparison Table

This table should help a user when considering the upgrade to the full paid version. Is it worth it? Check which features are not available and ask yourself if you need or want them. We also note topics covered in the Stellarium Mobile level 1 introductory software training course, free for RASC members.

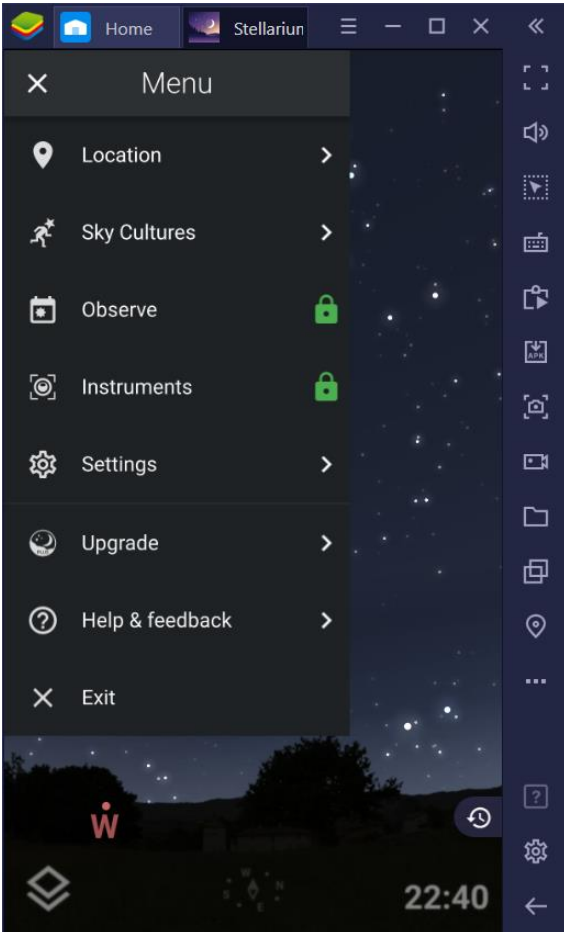
feature or capability	basic	full	covered in
product name	Mobile	Plus	level 1 training
cost *	free	CAD \$25	free to RASC
realistic sky display	yes	yes	yes
search by name, category, or favourites	yes	yes	yes
date and time and speed controls	yes	yes	yes
stars, to magnitude	8	24	n/a
control star label density	no	yes	yes
control star magnitude limit	no	yes	no
control star brightness	no	yes	no
constellations lines and borders	yes	yes	yes
other sky cultures and lore	yes	yes	yes
planets and asteroids	yes	yes	yes
planet image resolution	low	high	n/a
planet 3D interactive views	no	yes	no
control planet label density	no	yes	yes
artificial satellites	yes	yes	yes
space station 3D interactive view	no	yes	no
control satellite label density	no	yes	yes
deep sky objects, to magnitude	10	18	n/a
DSO image resolution	low	high	n/a
control DSO label density	no	yes	yes
azimuthal grid	yes	yes	yes
toggle cardinal points	yes	yes	yes
equatorial grid, current and J2000	no	yes	yes
ecliptic line	no	yes	yes
meridian line	no	yes	yes
celestial equator	no	yes	yes
toggle atmosphere	yes	yes	yes
control light pollution	no	yes	yes
ground fog	no	yes	yes
planets and satellites visible for the evening	no	yes	no
calendar with solar system events	no	yes	no
eyepiece, camera, Telrad oculars	no	yes	no
telescope control	no	yes	no
start-up time control	no	yes	yes
full-screen override	no	yes	yes
interactive visibility elevation graph	no	yes	no

* On the Android platform (perhaps also on the iOS?), there is an option wherein you can "try" the advanced features for 30 days paying CAD \$2.50.

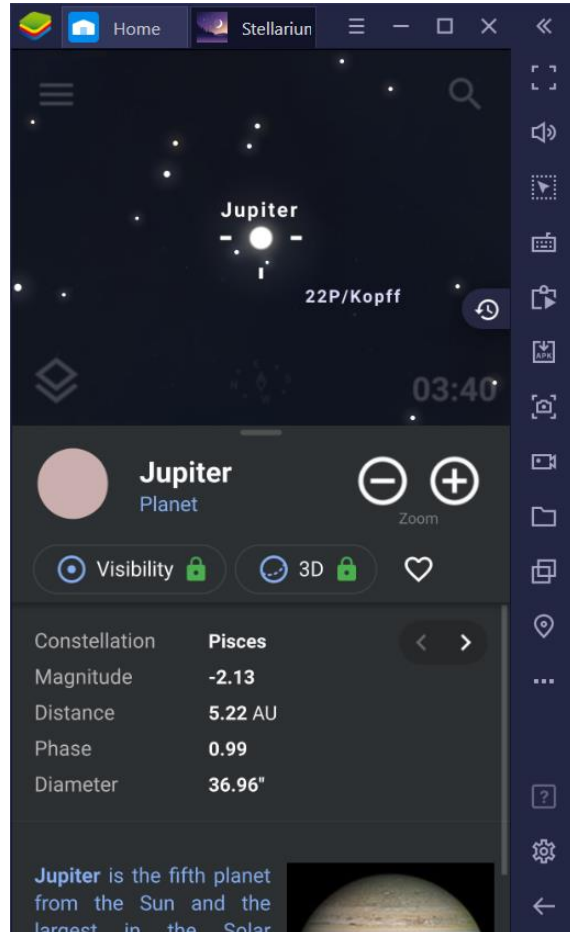
Using the Free Version

People using the free version may note a green padlock icon on various screens.

The lock represents a feature not available in the free version but unlocked with cash.



Locked features in the main menu. The Observe “Tonight” table and Calendar are not available. The Instruments menu with Oculars and telescope control are not available.



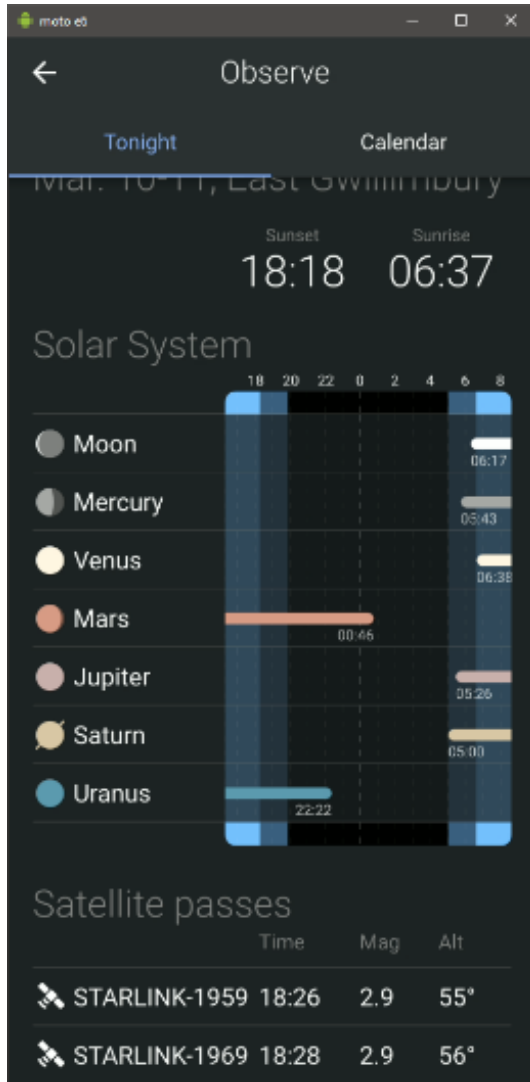
Locked features in the object information panel. The visibility elevation graph is not available; neither is the 3D viewer for the planet.

The free version limits stars display to magnitude 8. This puts the visibility of stars comfortably within the range of binoculars. But remember that visually in a 3-inch telescope, an observer can see magnitude 11 stars. A 6-inch aperture can reach magnitude 13. If the user has a medium to large telescope, the free version will not show all the stars they are seeing visually or in camera images.

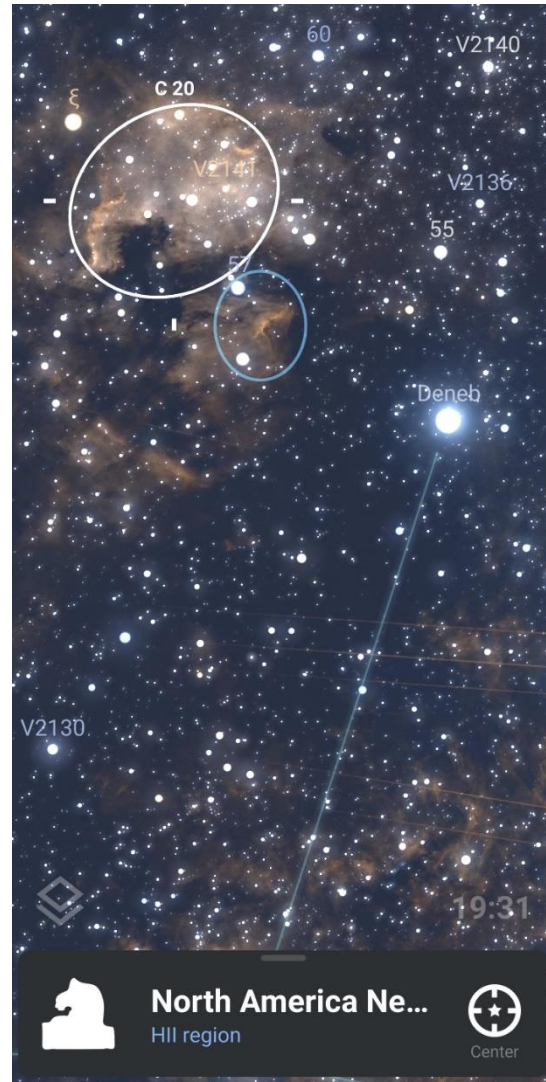
See below for what’s “missing” or locked from the free version.

Additional Features in the Plus Version

Here's a peak at some of the "advanced" features available only in the Plus edition.

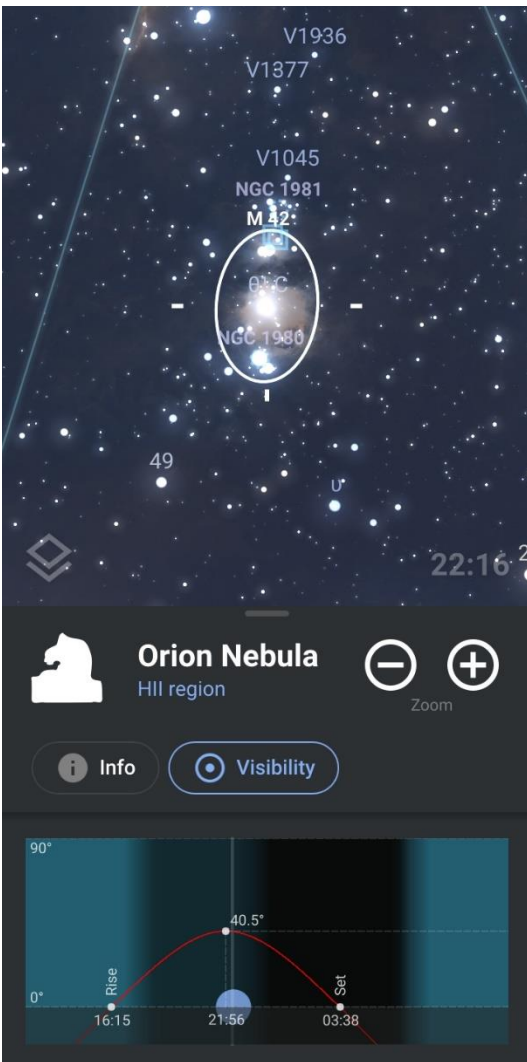


The Observe screen Tonight tab showing planet visibility and satellite flyovers for the particular evening. Also includes Calendar tab for solar system object listing.

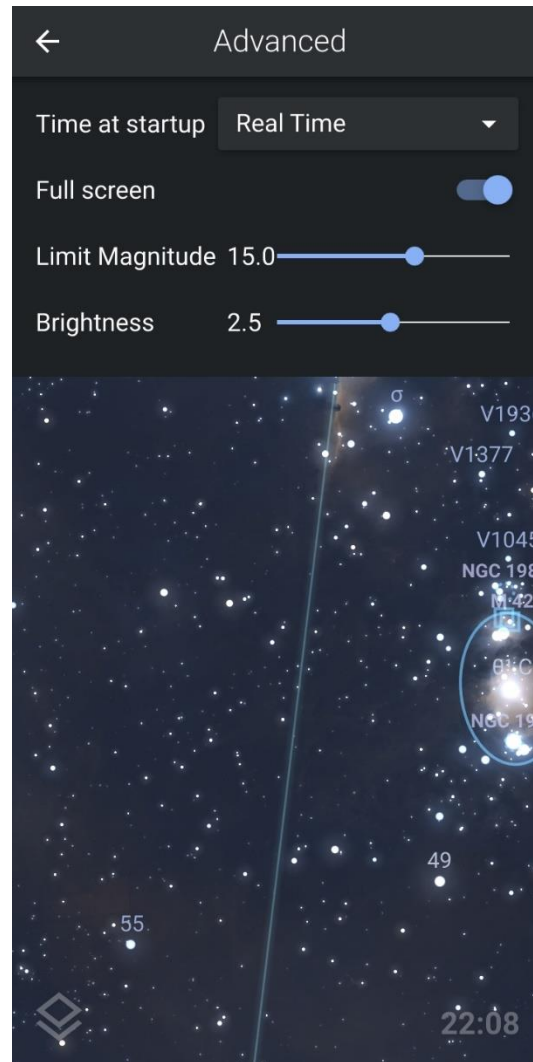


High resolution imagery for deep-sky objects (and planets) once unlocked. Additionally, more stars are shown, down to mag 24, from the GAIA DR2 data set.

And some more “advanced” features available only in the Plus edition.

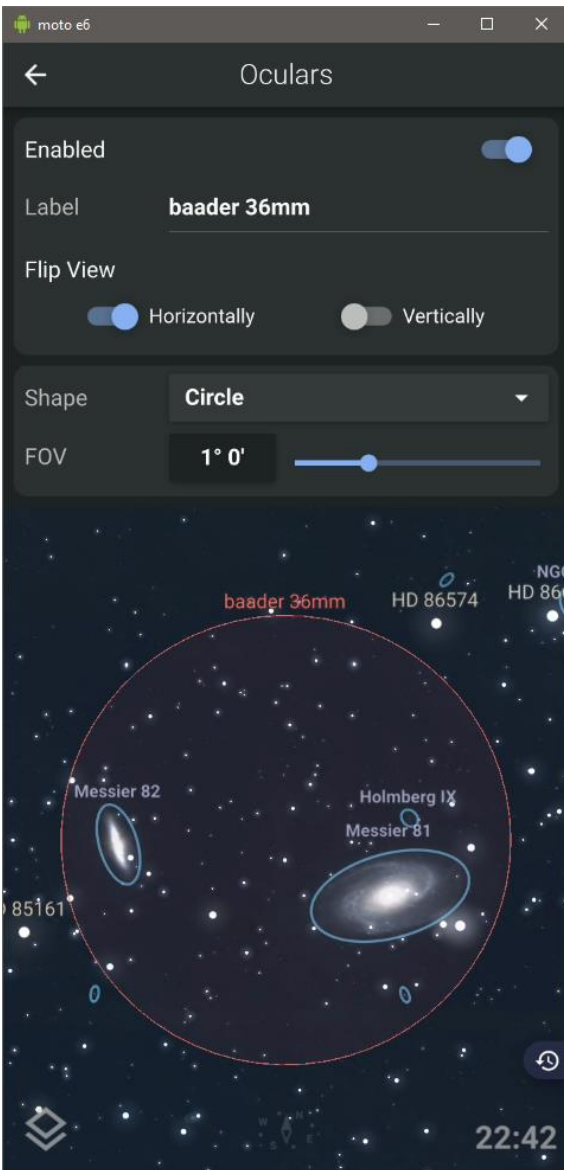


Visibility graph showing when the selected object will be at maximum elevation in the evening. Rise and set times. Graph is interactive.

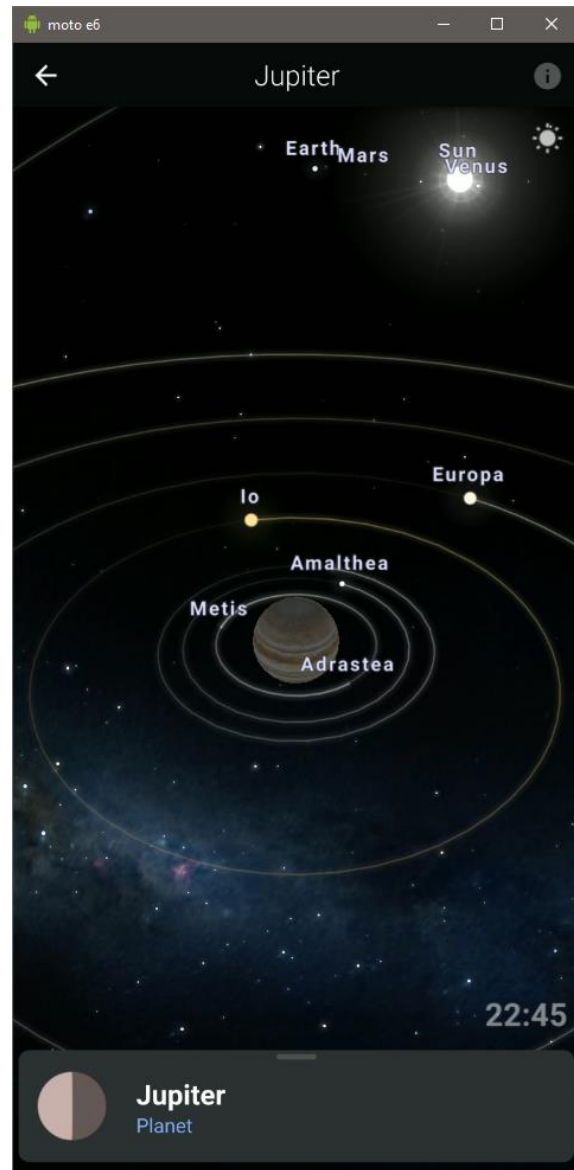


The Advanced settings screen offering controls for start-up time behaviour, full-screen override, and magnitude limits and brightness of stars.

And a few more Plus-only paid features.



Ocular feature with an eyepiece circle configured. Supports camera frame and Telrad circles. Supports view flipping according to optical train.



Interactive 3D View feature is available for planets and the International Space Station. Lighting option illuminates side of planet in shadow.

Colophon

Prepared on Thursday 16 June 2022 by Blake Nancarrow. Content first copied from blog post on blog.lumpydarkness.com then formatted in MS Word on Windows 10. Feature-set data from stellarium-labs.com web site, in-app messages, and from direct testing. The paid app with all features unlocked was used to show additional capability. The free version was installed in the Blue Stacks emulator to simulate the experience for a user using the basic version. Screen snapshots from the Motorola e6 smartphone directly, the Blue Stacks emulator for Windows, and the Genymobile Screen Copy open-source Windows application. Produced using version 1.8.8 for Android circa June 2022.